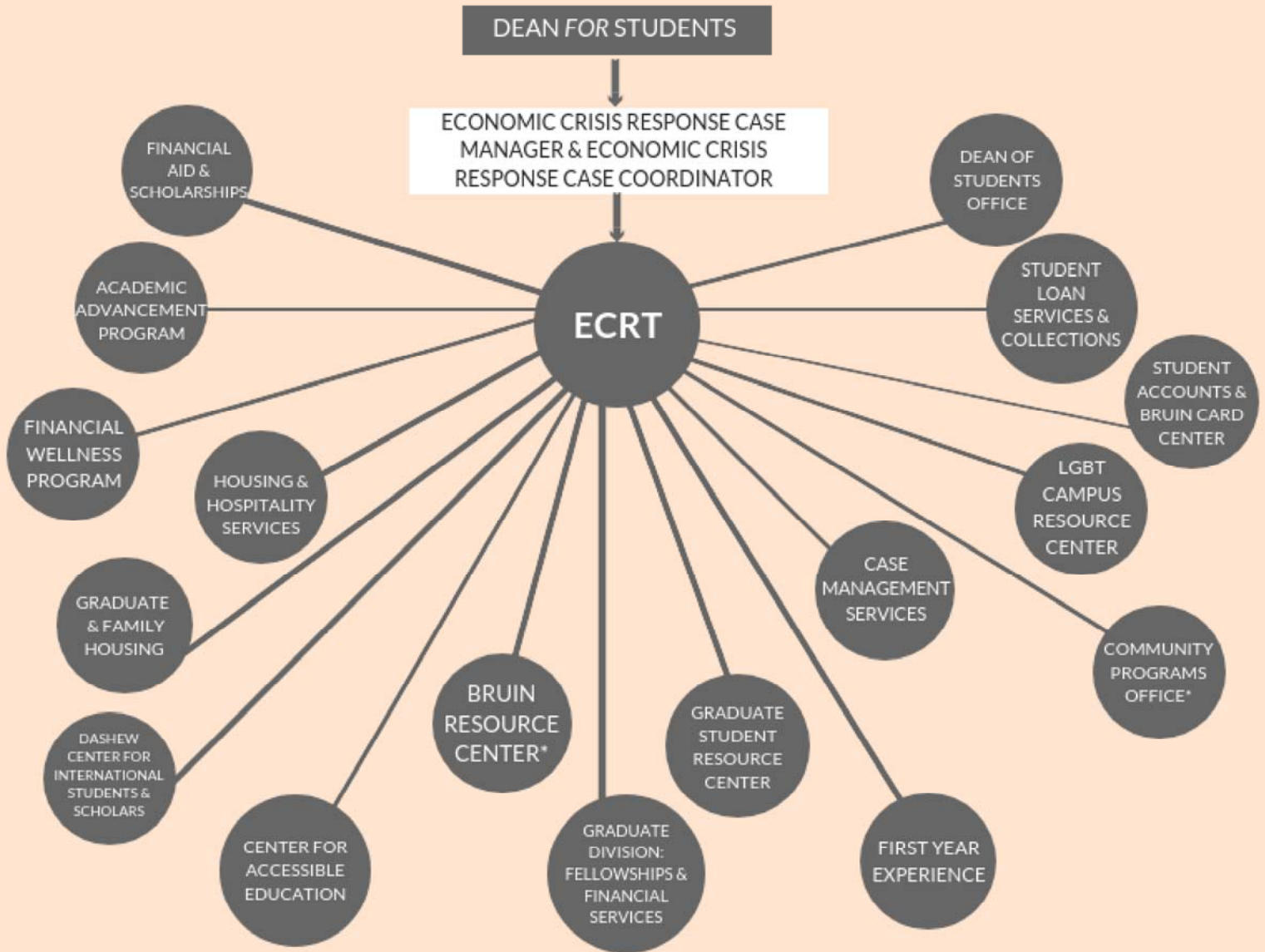


# ECONOMIC CRISIS RESPONSE TEAM (ECRT)

## ORGANIZATIONAL CHART

The Economic Crisis Response Team is a multi-disciplinary team that meets bi-weekly to discuss cases of students in financial crisis. The ECR Case Manager coordinates the team, and the ECR Case Coordinator manages initial intake of cases. The team of two then respond to students, and facilitate all interventions. Each team member provides insight based on their specific position to assist in the resolution of each student case.



\*Various staff from the Community Programs Office and the Bruin Resource Center participate in the Economic Crisis Response Team on a rotating basis. Current participants include the Social Work Assistant and SEA CLEAR Project Director from the Community Programs Office; the Bruin Guardian Scholars Program Director, the Undocumented Students Program Director, and the Students with Dependents & Collegiate Recovery Program Director from the Bruin Resource Center.